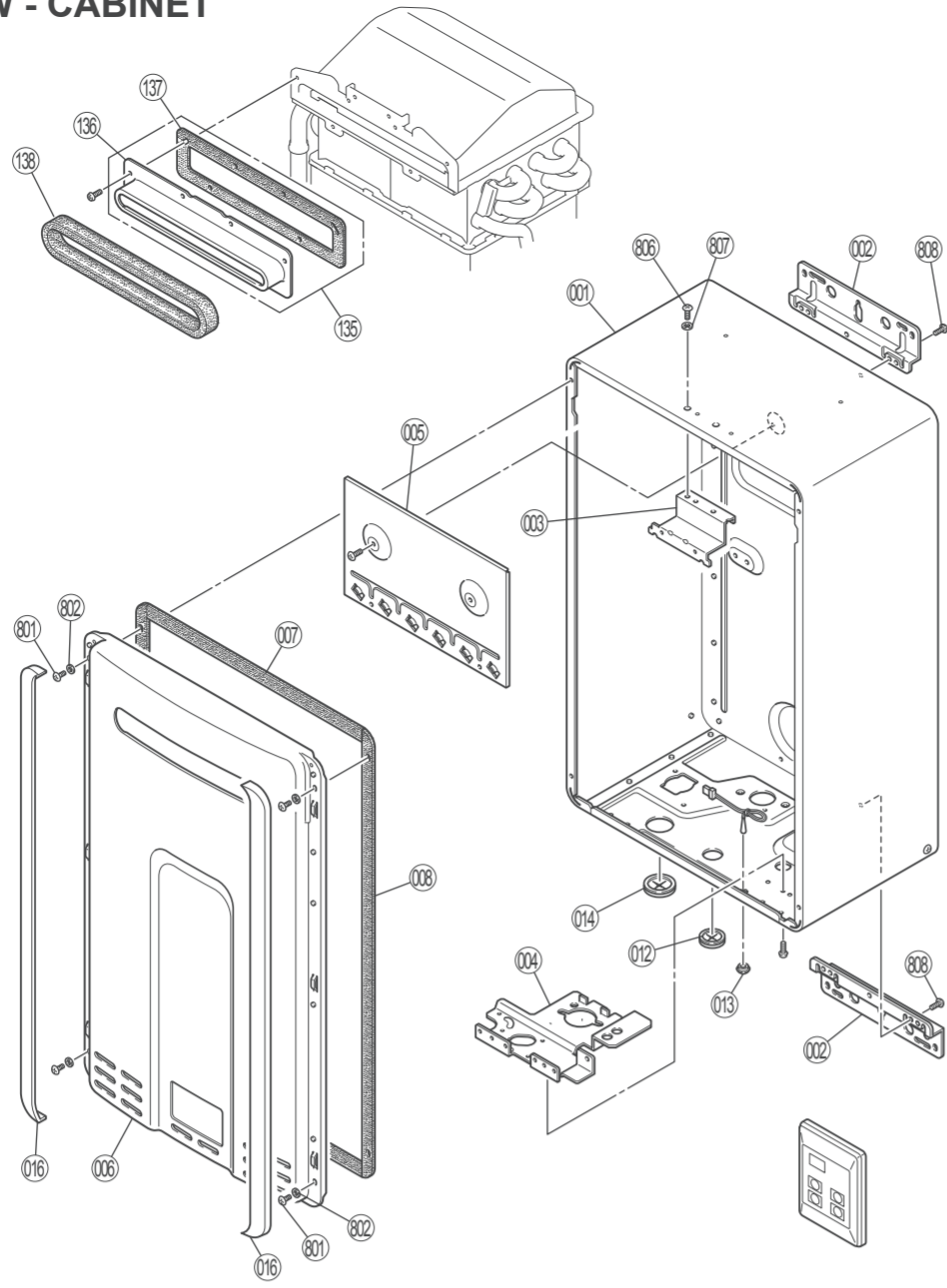
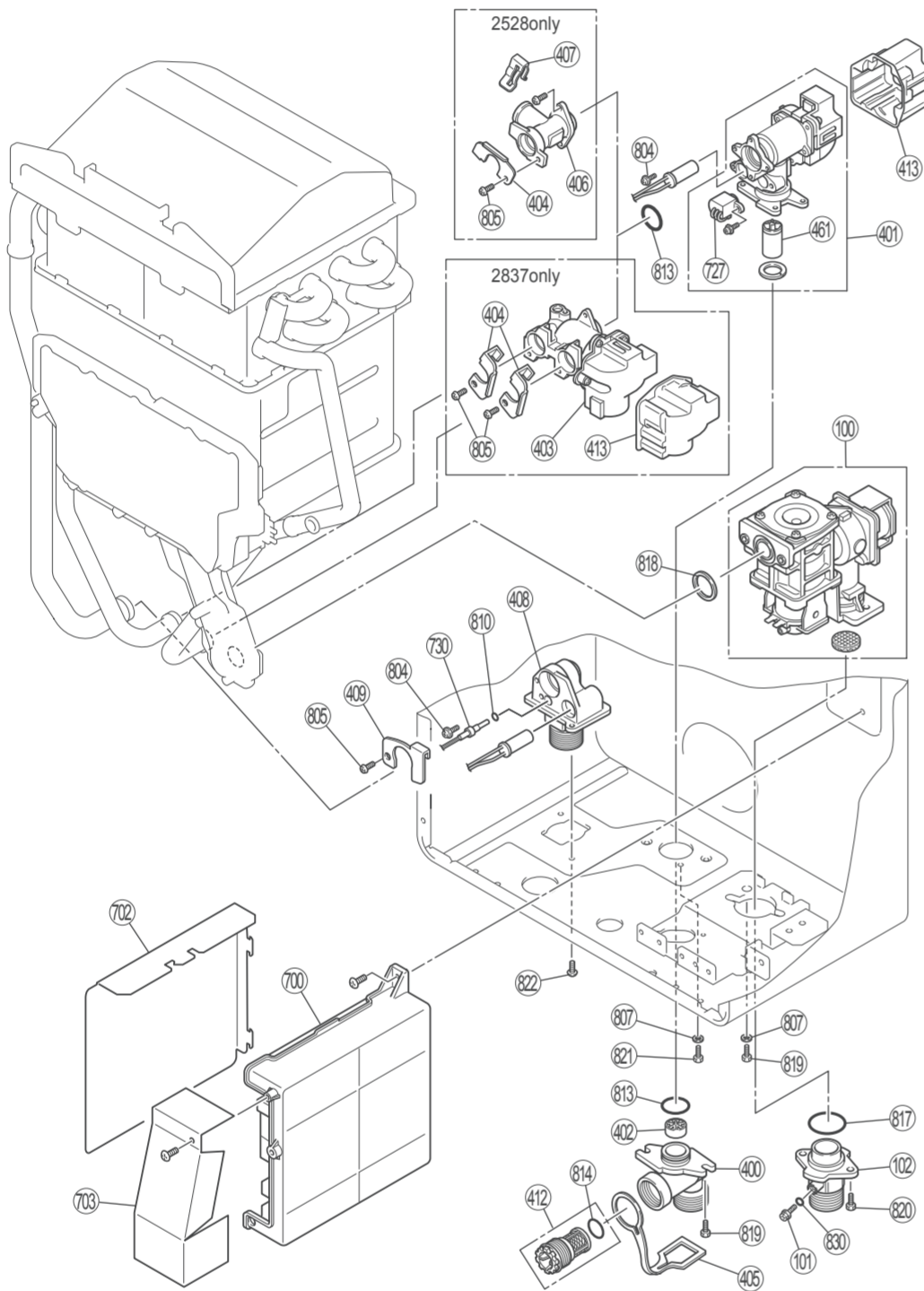




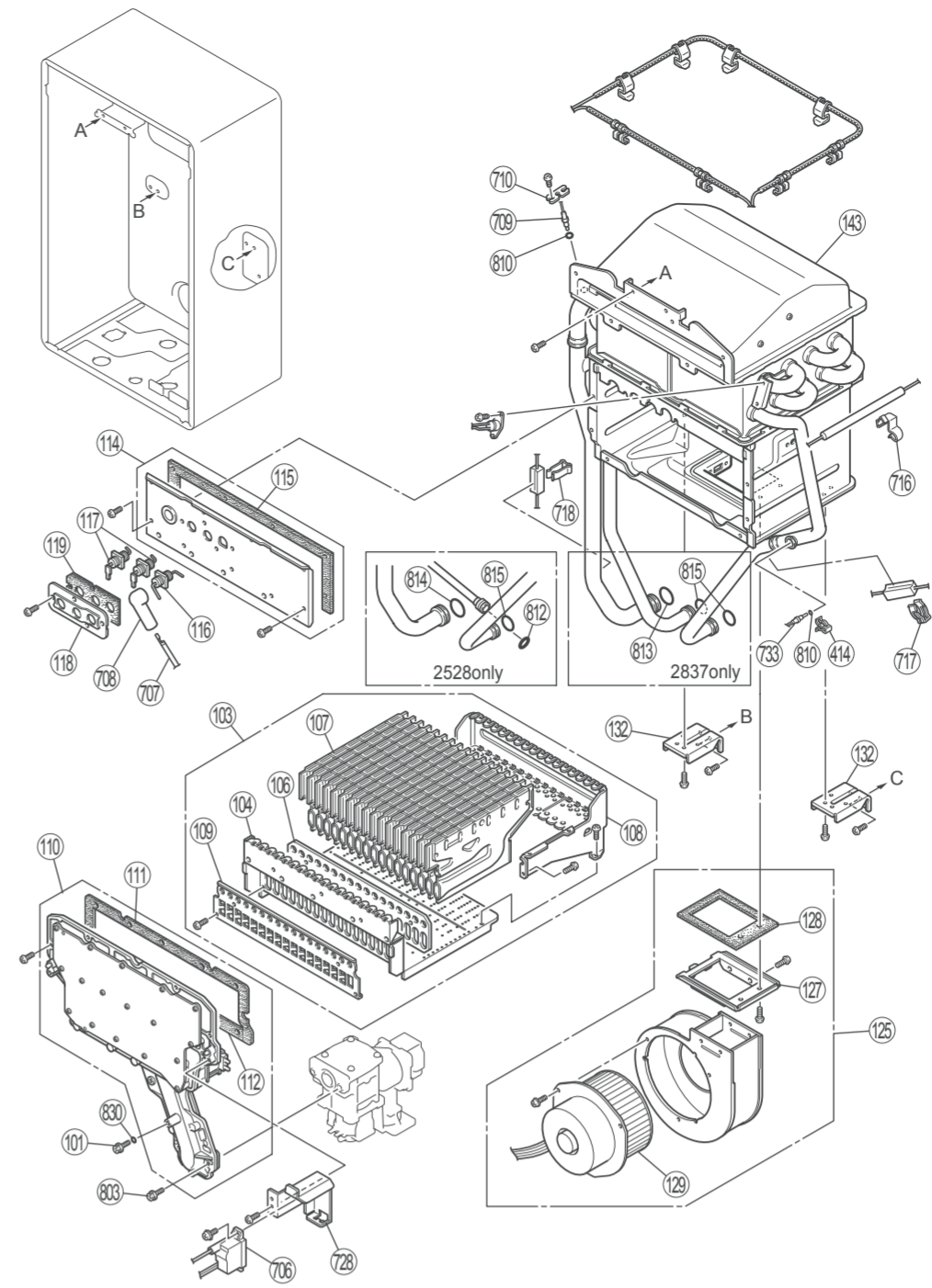
**EXPLODED VIEW - CABINET**



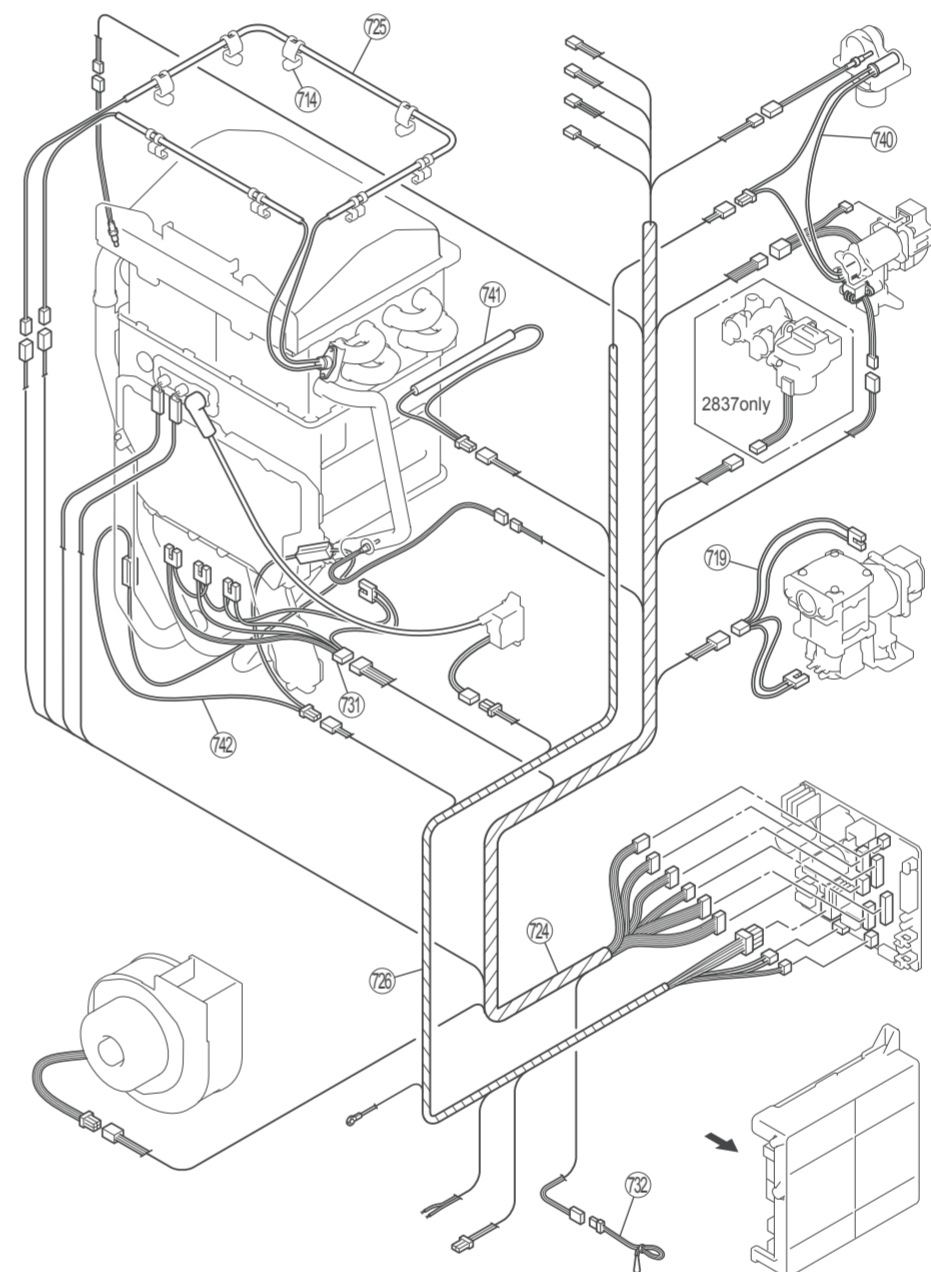
**EXPLODED VIEW - INTERNALS**



**EXPLODED VIEW - INTERNALS**



**EXPLODED VIEW - ELECTRICAL**



Item Description	Part Number	Qty	RL94e (VC2837)	Qty	RL75e (VC2528)	Item Description	Part Number	Qty	RL94e (VC2837)	Qty	RL75e (VC2528)	Item Description	Part Number	Qty	RL94e (VC2837)	Qty	RL75e (VC2528)
001 MAIN BODY	109000257	1	1	002 WALL BRACKET	109000281	2	2	132 HEAT EXCHANGER BRACKET	109000277	2	2	719 AWG18 HARNESS	105000162	1	1		
003 TOP SIDE REINFORCEMENT	109000260	1	1	003 FRONT PANEL PACKING	U245-3185-4	2	2	135 FLUE OUTLET ASSEMBLY	108000065	1	1	724 SENSOR HARNESS-2	105000164	1			
004 CONNECTION REINFORCEMENT	109000261	1	1	008 FRONT PANEL PACKING	109000077	2	2	136 FLUE OUTLET	108000066	1	1	724 SENSOR HARNESS-6	105000192			1	
005 HEAT PROTECTION PLATE	109000275	1	1	012 RUBBER STOP	CF79-41020-A	1	1	137 FLUE OUTLET PACKING	108000067	1	1	725 FUSE HARNESS	105000167	1	1		
006 FRONT PANEL	109000262	1	1	013 THERMISTOR STOP	109000276	1	1	138 SEAL PACKING	AH24-653-6	1	1	726 POWER SUPPLY HARNESS	105000181	1	1		
008 FRONT PANEL PACKING	109000077	2	2	014 RUBBER STOP	U245-125	1	1	143 HEAT EXCHANGER ASSEMBLY	107000100	1	1	727 WATER FLOW SENSOR	105000176	1	1		
012 RUBBER STOP	CF79-41020-A	1	1	016 SCREW COVER	109000197	2	2	143 HEAT EXCHANGER ASSEMBLY	107000109	1	1	728 IGNITOR BRACKET	109000272	1	1		
013 THERMISTOR STOP	109000276	1	1	100 GAS CONTROL ASSEMBLY	106000085	1	1	400 WATER INLET	H73-501-2	1	1	730 TWIN THERMISTOR	105000108	1	1		
014 RUBBER STOP	U245-125	1	1	101 TEST PORT SET SCREW	C10D-5	2	2	401 WATER FLOW SERVO & SENSOR	107000090	1	1	731 SOLENOID HARNESS	105000168	1	1		
016 SCREW COVER	109000197	2	2	102 3/4 GAS INLET	106000065	1	1	402 RECTIFIER	M8D1-15	1	1	732 THERMISTOR	105000187	1	1		
100 GAS CONTROL ASSEMBLY	106000085	1	1	103 BURNER UNIT ASSY (LPG)	106000072	1	1	403 BY-PASS SERVO ASSEMBLY	107000091	1	1	733 THERMISTOR	H111-650	1	1		
101 TEST PORT SET SCREW	C10D-5	2	2	103 BURNER UNIT ASSY (NG)	106000073	1	1	404 PIPE BRACKET	AH69-310	2	1	740 HEATER	105000154	1	1		
102 3/4 GAS INLET	106000065	1	1	104 BURNER CASE FRONT PANEL	106000074	1	1	405 PLUG BAND	109000018	1	1	741 HEATER	105000169	1	1		
103 BURNER UNIT ASSY (LPG)	106000072	1	1	106 PACKING	109000264	1	1	406 FIXED BYPASS	107000103	1	1	742 HEATER	105000170	1	1		
103 BURNER UNIT ASSY (NG)	106000073	1	1	107 BURNERS	106000054	17	17	407 CLIP	109000278	1	1	801 TRUSS SCREW	CP-30580	4	4		
104 BURNER CASE FRONT PANEL	106000074	1	1	108 BURNER CASE BACK PANEL	106000075	1	1	408 HOT WATER OUTLET (3/4 NPT)	107000092	1	1	802 NYLON WASHER	AU33-184X01	4	4		
106 PACKING	109000264	1	1	109 DAMPER(LPG)	106000076	1	1	408 HOT WATER OUTLET (3/4 NPT)	107000104	1	1	803 SCREW	109000280	2	2		
107 BURNERS	106000054	17	17	109 DAMPER (NG)	106000077	1	1	409 STOP BRACKET	U211-322	1	1	804 SCREW	U217-449	2	2		
108 BURNER CASE BACK PANEL	106000075	1	1	110 MANIFOLD ASSEMBLY (LPG)	106000078	1	1	409 STOP BRACKET	AU162-1876	1	1	805 SCREW	CP-20883-410UK	3	2		
109 DAMPER(LPG)	106000076	1	1	110 MANIFOLD ASSEMBLY (NG)	106000079	1	1	412 FILTER ASSEMBLY	H98-510-S	1	1	806 SCREW	109000025	2	2		
109 DAMPER (NG)	106000077	1	1	111 COMB CHAMBER PACKING UPPER	106000080	1	1	413 COVER	107000093	2	1	807 PLASTIC WASHER	AU48-174	4	4		
110 MANIFOLD ASSEMBLY (LPG)	106000078	1	1	111 COMB CHAMBER PACKING LOWER	106000081	1	1	414 CLIP	105000090	1	1	808 SCREW	CP-30580	4	4		
110 MANIFOLD ASSEMBLY (NG)	106000079	1	1	114 COMB CHAMBER FRONT PANEL	106000082	1	1	461 WATER FLOW TURBINE	107000088	1	1	810 O-RING	M10B-2-4	3	3		
111 COMB CHAMBER PACKING UPPER	106000080	1	1	115 COMB CHAMBER PACKING - 2	106000083	1	1	700 PC BOARD	105000159	1	1	812 O-RING	M10B-2-10	1	1		
112 COMB CHAMBER PACKING LOWER	106000081	1	1	116 ELECTRODE	105000179	1	1	700 PC BOARD	105000190	1	1	813 O-RING	M10B-2-18	3	2		
114 COMB CHAMBER FRONT PANEL	106000082	1	1	117 FLAME ROD	105000093	2	2	702 COVER	109000247	1	1	814 O-RING	M10B-2-16	1	2		
115 COMB CHAMBER PACKING - 2	106000083	1	1	118 ELECTRODE BRACKET	105000156	1	1	703 EC COVER	109000248	1	1	815 O-RING	M10B-2-14	2	1		
116 ELECTRODE	105000179	1	1	119 ELECTRODE PACKING	105000157	1	1	706 IGNITOR	105000180	1	1	817 O-RING	M10B-1-24	1	1		
117 FLAME ROD	105000093	2	2	125 FAN MOTOR ASSEMBLY	108000060	1	1	707 HIGH TENSION CORD	105000180	1	1	818 PACKING	109000181	1	1		
118 ELECTRODE BRACKET	105000156	1	1	127 FAN CONNECTING BRACKET	108000062	1	1	708 ELECTRODE SLEEVE	BH38-710-240	1	1	819 HEXAGON HEAD SCREW	ZQAA0512UK	3	3		
119 ELECTRODE PACKING	105000157	1	1	128 FAN CONNECTING BRACKET PACKING	108000063	1	1	709 THERMISTOR	AU206-218	1	1	820 HEXAGON HEAD SCREW	ZQAA0514UK	2	2		
125 FAN MOTOR ASSEMBLY	108000060	1	1	129 FAN MOTOR	108000050	1	1	710 RETAINER (THERMISTOR)	105000114	1	1	821 HEXAGON HEAD SCREW	ZQAA0508UK	1	1		
127 FAN CONNECTING BRACKET	108000062	1	1					714 FUSE HOLDER	CP-90172	1	1	822 SCREW	CP-30580	2	2		
128 FAN CONNECTING BRACKET PACKING	108000063	1	1					716 HEATER CLIP	U250-670X01	8	8	830 O-RING	M10B-13-4	2	2		
129 FAN MOTOR	108000050	1	1					717 HEATER CLIP	109000271	2	2	888 MANUAL	100000244	1	1		
								718 HEATER CLIP	AU100-721	1	1	889 TECH SHEET	100000246	1	1		
								718 HEATER CLIP	AU124-618	1	1						
									109000282	1	1						